

IPTV Streamer & Encoder with SDI Input

**Full HD
1080****HD
SDI****H.264
MPEG-4/AVC**

- ✓ H.264 encoder & IP streamer combined
- ✓ HD-SDI and SD-SDI input for encoding
- ✓ HD Resolution 1080p, 1080i, 720p. Dual IP streams out.
- ✓ IP output: RTSP, RTMP, HTTP, unicast / multicast
- ✓ Distribution of video camera, PC monitor, satellite receiver, DVD / Blu-ray player content over LAN, WAN or internet.
- ✓ Live stream broadcast
- ✓ Video-over IP applications
- ✓ IPTV/OTT applications
- ✓ Video conferencing
- ✓ Local IPTV on LAN applications, Corporate IPTV, Hotel IPTV
- ✓ HD and SD video encoding (incl. 1080p)

IRENIS SDE-264 encoder enables the distribution of SD and HD tv/video content through IP networks in digital quality.

The live video can be watched on tv sets with IPTV Set-Top Boxes, on PC's and tablets with VLC Player.

IRENIS SDE IPTV encoder is designed for TV signal distribution in excellent quality over LAN and INTERNET.

The H.264 compression technology features low-latency and low bit rates for IPTV/OTT systems. The high-efficient bandwidth use saves bandwidth cost through all its resolution range,



Distribution of SD and HD TV channels through the IPTV/OTT network using state-of-art IP technology from almost any kind of video input.

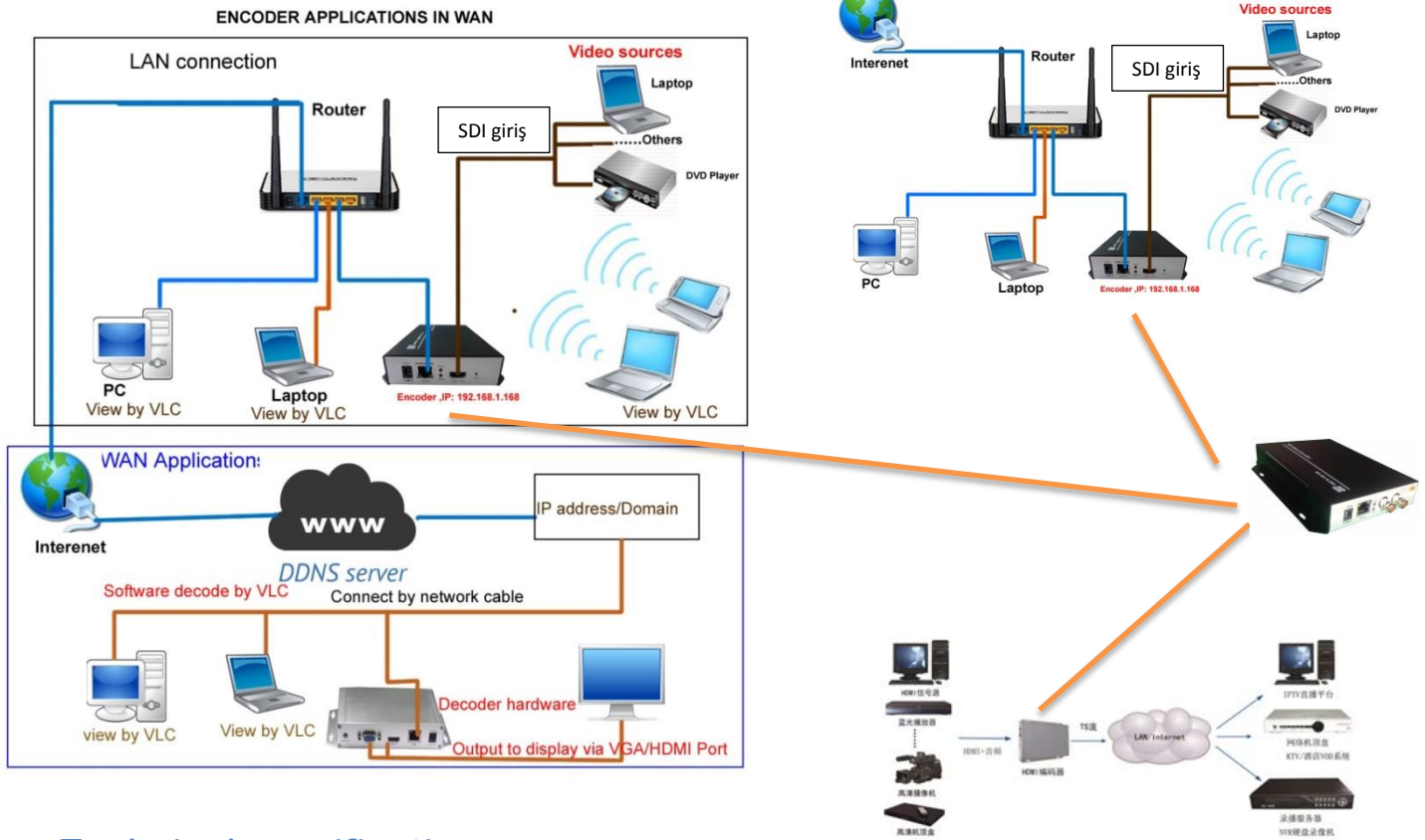
Excellent video and audio quality.

High reliability. No regular service and maintenance need during operation.





Application examples:



Technical specifications:

Function	H.264 Encoder and IP Streamer
INPUT	
Connection	HD-SDI, SD-SDI input and loop output (BNC connector)
Resolution	1080p, 1080i, 720p (HDMI) and below
Video encoder	MPEG-4 AVC / H.264 high profile Level 4.0
Audio encoder	AAC
Audio Bit-rate:	Bit-rate: 32k/48k/96k/128k/160k/192k, Data-rate: 64 kbps-384 kbps
SYSTEM	
Data interface	RJ45, 1000M Ethernet interface, Control over web browser
Protocol	HTTP, RTSP, RTMP; unicast/multicast
Data Rate	0.8 Mbps – 12 Mbps
Rate control	CBR/VBR
GOP Structure	IBBP
Adv Pretreatment	De-interlacing, Noise reduction, Sharpening
SYSTEM	
Power supply	12V DC
Dimensions	170x130x30mm
Weight	0.5 kg
Consumption	5W

